

Yeast Extract Peptone Dextrose (YPD) Agar



Medium used for maintaining and propagating yeasts in molecular microbiology procedures.

• CONTENTS (Liter)

Yeast Extract	10.0 g
Peptone	20.0 g
Dextrose	20.0 g
Agar	15.0 g
Final pH = 6.5 ± 0.2 at 25°C.	

• PROCEDURE

Suspend 65.0 G of powder in 1 L of distilled or deionized water. Heat to boiling until completely dissolved. Sterilize by autoclave at 121°C for 15 minutes. Cool to 45-50°C in water bath. Dispense in petri dishes.

• INTERPRETATION

Yeast Extract Peptone Dextrose (YPD) Agar is a medium used for maintaining and propagating yeasts in molecular microbiology procedures. Peptone is a source of carbon, nitrogen and essential nutrients. Yeast extract provides vitamins. Dextrose provides carbohydrates. Agar is the solidifying agent.

• TECHNIC

Inoculate the plates with spreading the specimen on surface of the medium using a sterile loop. Incubate at 25 ± 2 °C for 48 - 72 hours. Refer appropriate references for recommended test procedure.

• QUALITY CONTROL FOR USE

Dehydrated medium

Appearance: free-flowing, homogeneous.

Color: beige.

Prepared medium

Appearance: slightly opalescent.

Color: light amber.

Incubation conditions: 25 ± 2 °C / 48 - 72 hours

Microorganism	ATCC	Inoculum CFU	Growth
<i>Saccharomyces cerevisiae</i>	76625	50-100	good

• STORE

The powder is very hygroscopic. Store the powder at room temperature, in a dry environment, in its original container tightly closed and use it before the expiry date on the label or until signs of deterioration or contamination are evident. Store prepared medium at 2-8°C.

• REFERENCES

1. Ausubel, Brent, Kingston, Moore, Seidman, Smith and Struhl. 1994. Current protocols in molecular biology, Current Protocols, Brooklyn, N.Y.

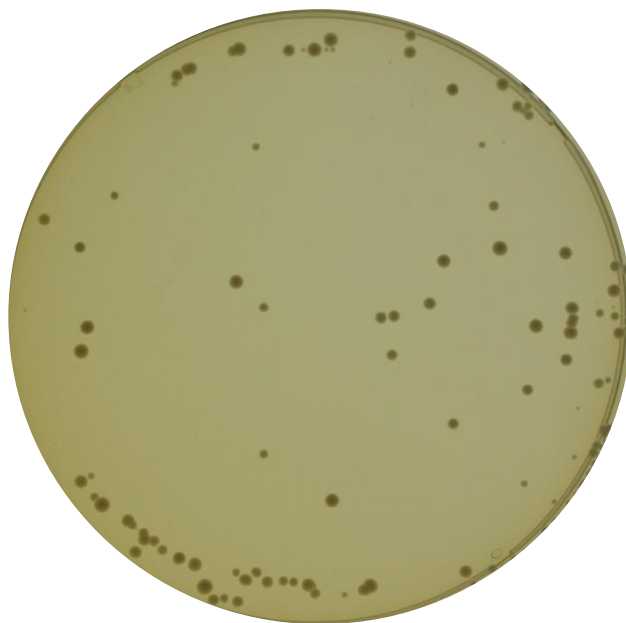
• PACKAGE

Cat. No : MB-Y0616 Yeast Extract Peptone Dextrose (YPD) Agar	500 G
---	-------

• MICROBIAL CULTURE IMAGES



None



Saccharomyces cerevisiae ATCC 76625

Incubation conditions : 25±2°C 42-48h